

ROAD INDEX

A	I	R	ROCK CREEK RD. A1
	J		JOANN DRIVE C-3
B	K	S	BURROWS RD. BI-FI KILE ROAD A2-A6 SUN ROAD D5
	L	T	LEGGETT RD. BI-F2
C			CLAY STREET BI-C6
D	M	U	DEWEY ROAD CI MADISON RD. DI-D6 MORGAN RD. FI-F3 MURPHY RD. FI
E		V	
	N		
F		W	WHITNEY RD. D5-F5 WOODHILL DR. B1
	O		
G		X	G.A.R. HIGHWAY A4-F4
	P	Y	PLANK ROAD BI-F6
			HART ROAD A2-E2 HAUTALA ROAD C6
	Q	Z	

- ① LEDGEMONT SCHOOL
- ② COMMUNITY CHURCH
- ③ MONTVILLE METHODIST CHURCH
- ④ MONTVILLE CEMETERY
- ⑤ MONTVILLE VOL. FIRE DEPT.
- ⑥ UNITED STATES POST OFFICE
- ⑦ MONTVILLE TOWN HALL
- ⑧ STATE HIGHWAY GARAGE (SUB STATION)
- ⑨ MONTVILLE COMMUNITY CENTER

MONTVILLE TOWNSHIP

SCALE: 1" = 2000'

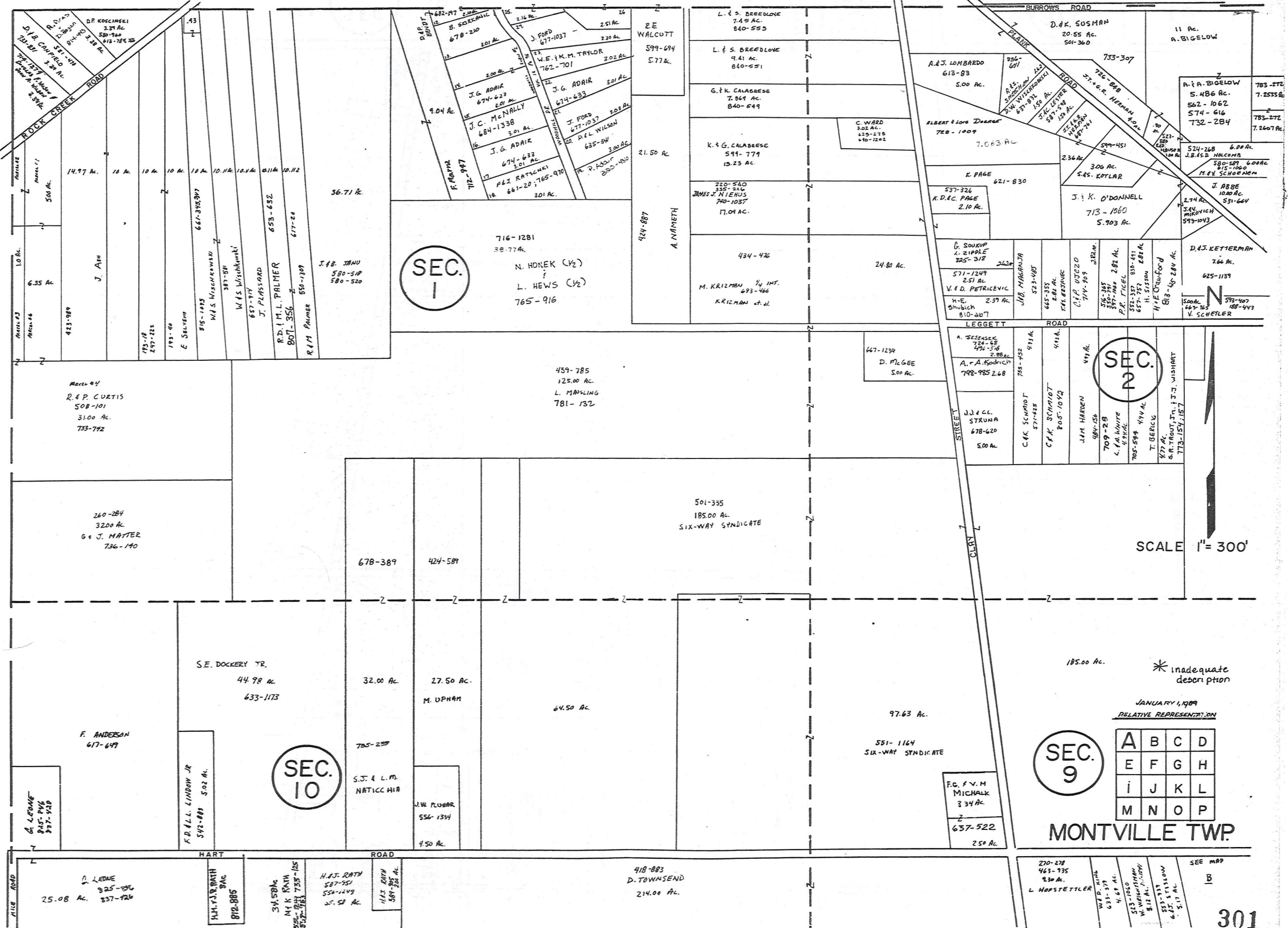
ROBERT L. PHILLIPS,
GEAUGA COUNTY ENGINEER

--- UNPAVED ROADS
--- TOWNSHIP LINE
--- PAVED ROADS
--- COUNTY LINE

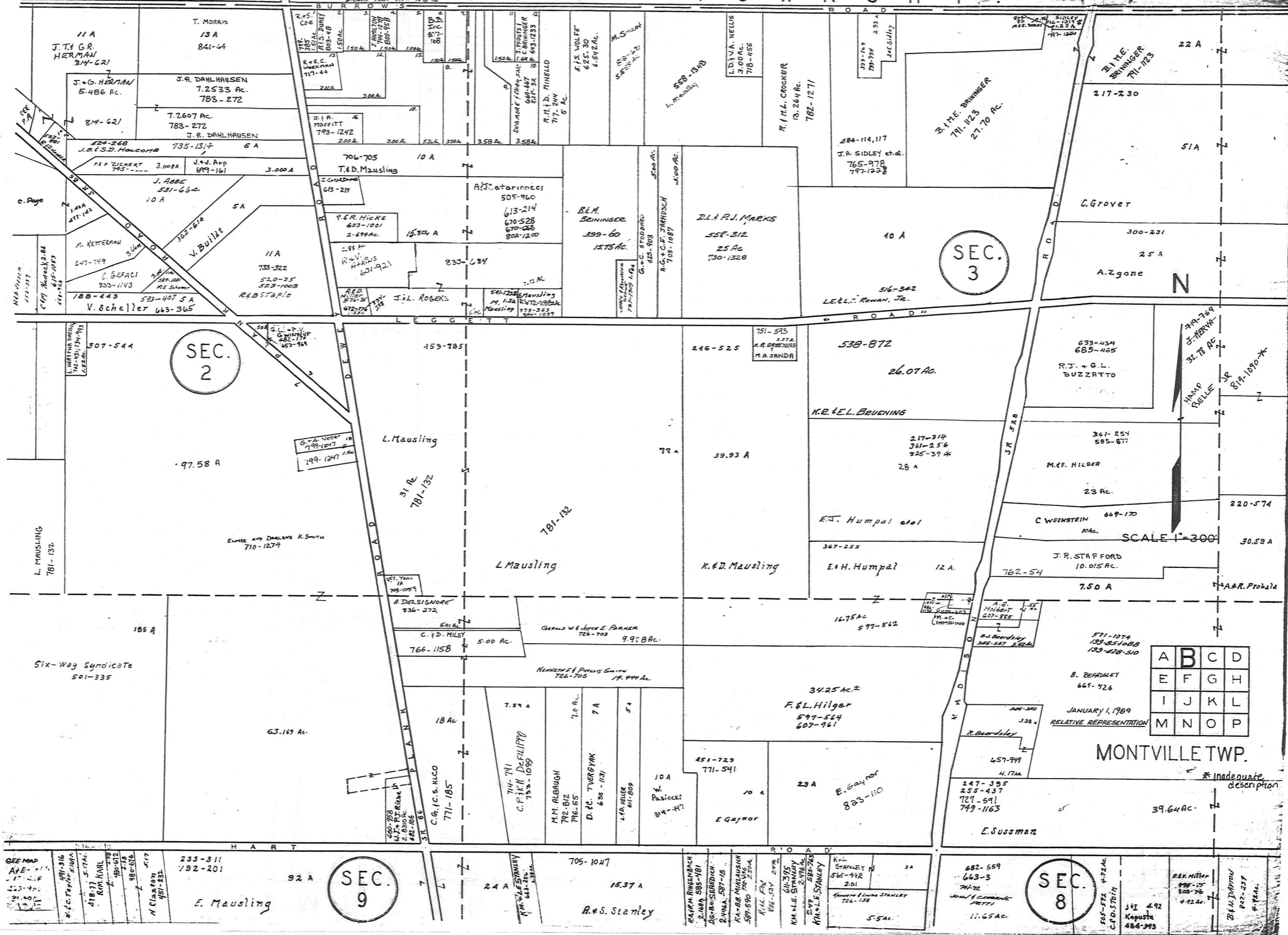


T H O M P S O N T O W N S H I P

H A M B D E N T O W N S H I P



T H O M P S O N T O W N S H I P



SEC. 2

SEC. 3

SEC. 9

SEC. 8

A	B	C	D
E	F	G	H
I	J	K	L
M	N	O	P

JANUARY 1, 1989
RELATIVE REPRESENTATION

MONTVILLE TWP.

* inadequate description

SEE MAP A-E
17-18
23-24
29-30
31-32

233-311
192-201
E. Mausling

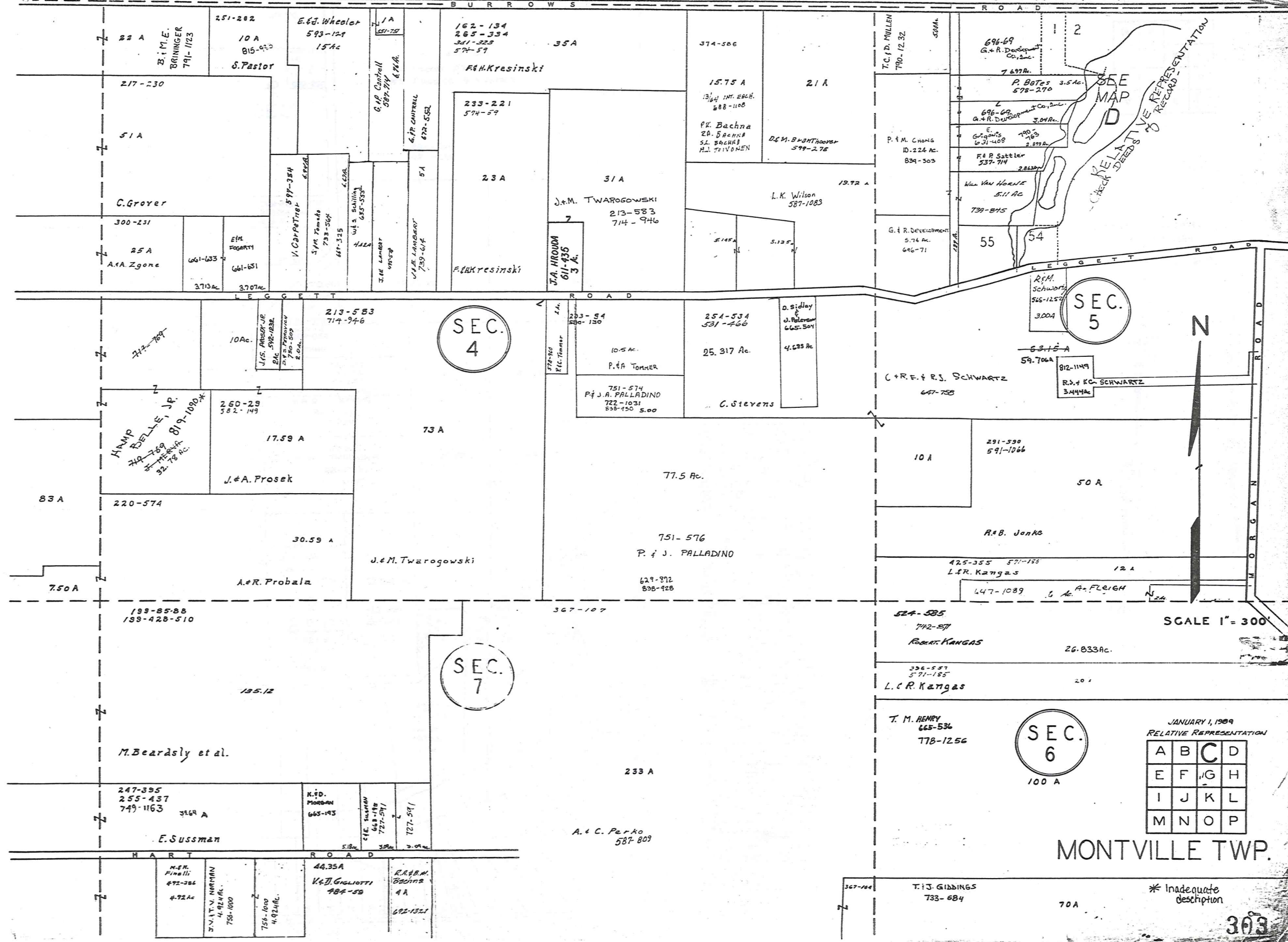
705-1047
15.37 A
A.W.S. Stanley

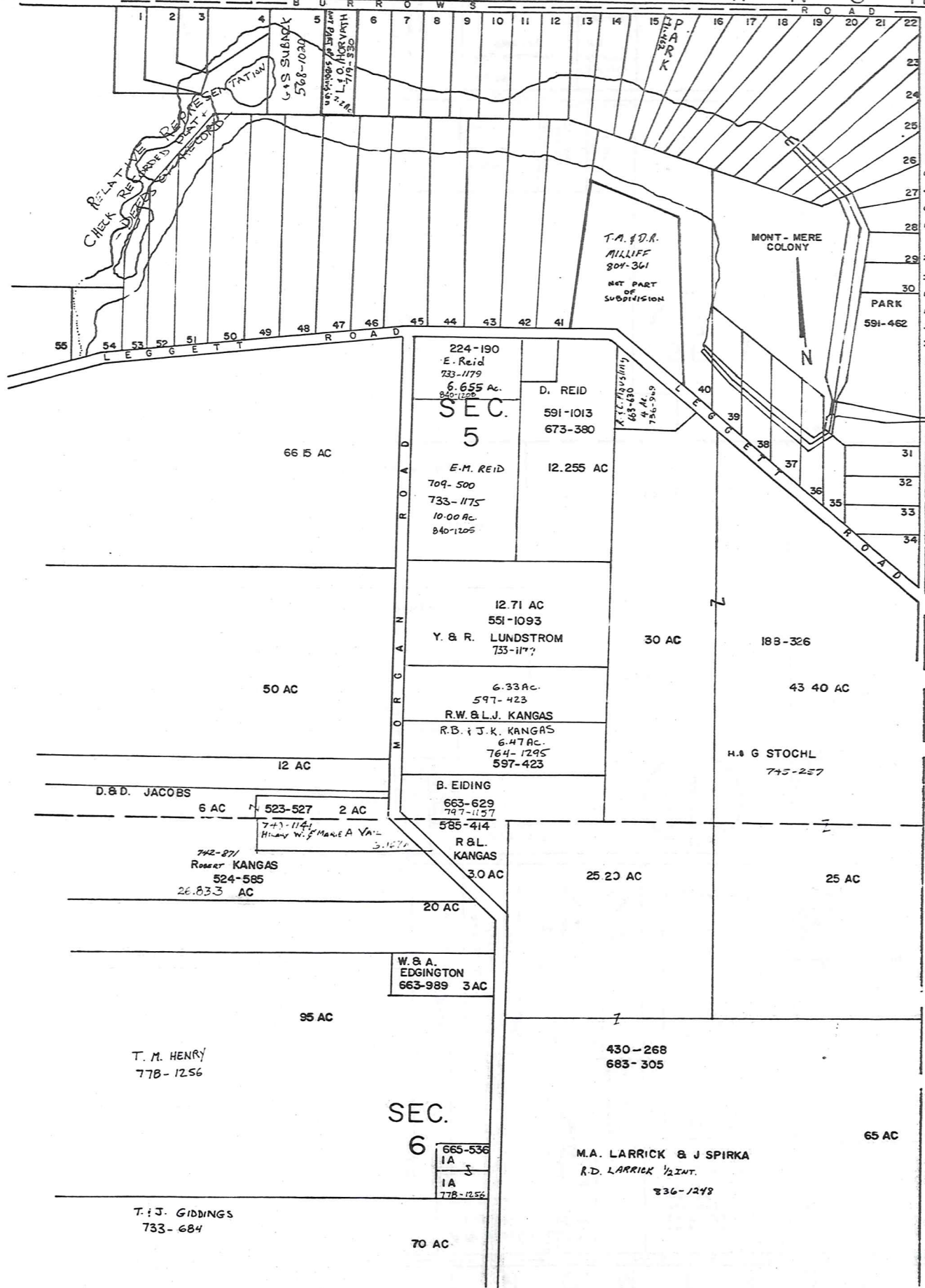
682-559
663-3
11.65 AC.

R.R. Miller
998-75
808-76
422 AC.

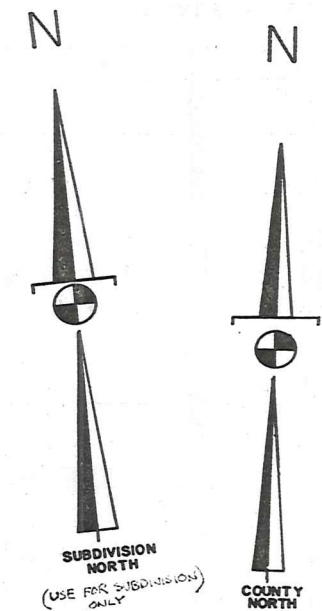
B.L. Johnson
827-239
478 AC.

T H O M P S O N T O W N S H I P





MONT-MERE COLONY		
SUBDIVISION ONE - Vol. 1 - Pg. 94		
1		
2	J.C. NICHOLS	837-492
3	M. B. WATKINS	723-237
4	M. B. WATKINS	622-292
5	C. D. & S. L. SUBMER	526-1022
6	C. D. WATKINS	700-1022
7	D. F. WATKINS	762-1022
8	J. J. & J. R. PUGHEN	763-633
9	J. C. O'DELL	747-1335
10	J. E. GUBBI	524-666
11	J. C. LIPP	417-347
12	C. E. LIPP	524-1144
13	THOMAS J. REYEN	748-500
14	C. S. V. REYNOLDS	633-566
15	J. S. WATKINS	524-877
16	J. J. McDOUGALL	729-1222
17	D. O'DELL	841-245
18	N. E. UMRELL	721-024
19	J. H. EMERSON	821-122
20	G. E. W. WATKINS	524-217
21	T. J. BROWN	723-1337
22	K. E. AMMON	671-1217
23	W. W. WATKINS	723-422
24	R. D. WATKINS	524-212
25		
26	T. D. DUNN	524-22
27	G. W. WATKINS	435-1022
28	T. A. LAMOND	624-1022
29	R. E. STRONG	722-1199
30	L. P. WATKINS	524-217
31	D. KINGSLAND	675-611
32	A. S. M. AUDES	643-914
33	C. G. WATKINS	812-1022
34	K. WATKINS	524-212
35	K. WATKINS	627-267
36	K. WATKINS	627-267
37	K. WATKINS	627-267
38	J. WATKINS	524-217
39	J. WATKINS	524-217
40	L. E. WATKINS	823-1222
41	J. GERRARDI F. SIMCO	767-210
42	D. E. WATKINS	627-1022
43	R. W. WATKINS	724-212
44	M. E. WATKINS	524-212
45	C. WATKINS	627-217
46	"	"
47	"	"
48	"	"
49	"	"
50	"	"
51	"	"
52	"	"
53	"	"
54	"	"
55	"	"



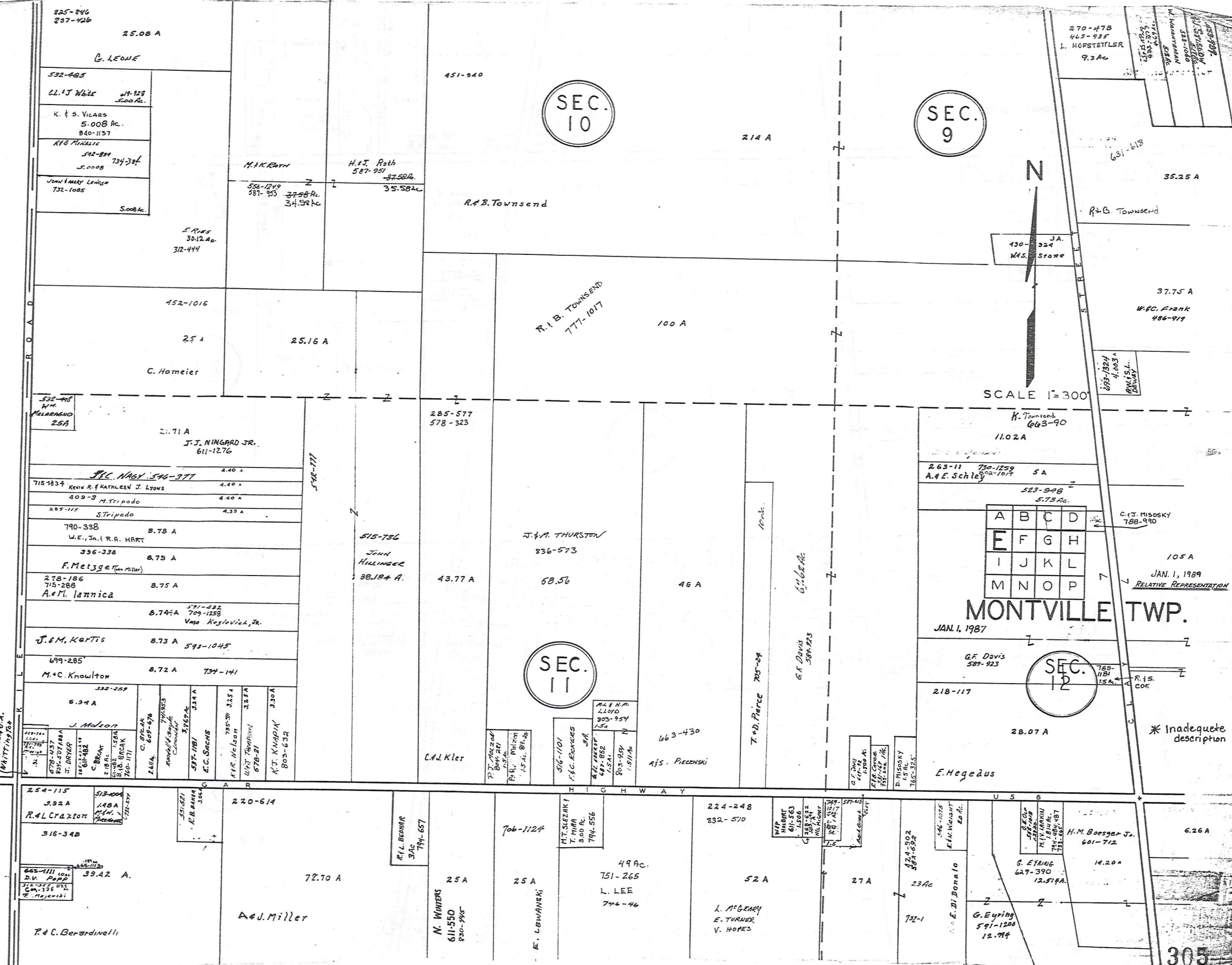
SCALE: 1" = 300'
 JAN. 1, 1929
 RELATIVE REPRESENTATION

* Inadequate description

A	B	C	D
E	F	G	H
I	J	K	L
M	N	O	P

MONTVILLE TWP.

H A M B D E N T O W N S H I P



SEC. 10

SEC. 9

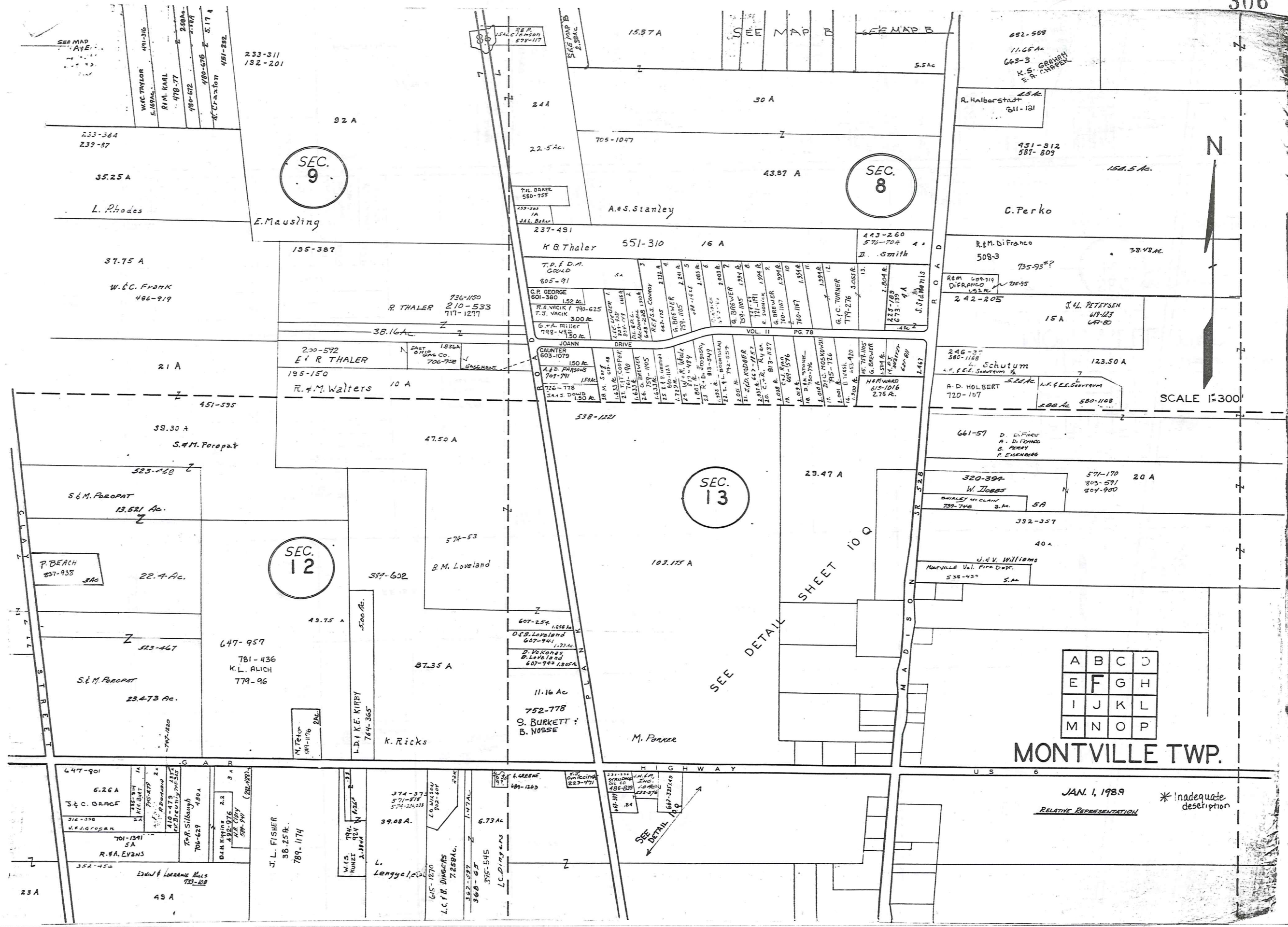
SEC. 11

SEC. 12

MONTVILLE TWP.
JAN. 1, 1987

A	B	C	D
E	F	G	H
I	J	K	L
M	N	O	P

* Inadequate description



SEC. 9

SEC. 8

SEC. 13

SEC. 12

MONTVILLE TWP.

JAN. 1, 1989

*Inadequate description

RELATIVE REPRESENTATION

SCALE 1"=300'

N

A	B	C	D
E	F	G	H
I	J	K	L
M	N	O	P

SEE DETAIL SHEET 10 Q

SEE DETAIL 10 Q

SEE MAP A
WAC TAYLOR 491-316
S. 187A.S.
R.M. KARL 478-77
180-672
180-676
M. Crawford 451-882

233-384
239-87
35.25 A
L. Rhodes
E. Mausing

37.75 A
W.C. Frank
486-919

21 A
E. R. Thaler
195-150
R. F. M. Walters 10 A

39.30 A
S. M. Poropat
523-410

S. M. Poropat
13.521 Ac.
P. Beach 837-938
22.4 Ac.523-467

647-957
781-436
K.L. Alich
779-96
23.473 Ac.787-120

6.26 A
S. C. DRACE
316-390
701-1341
R. W. EVANS
352-452

J. L. FISHER
38-25 R.
789-1174

39.08 A.
L. Langgelle

45 A
Edwin & Lorraine Mills
733-128

92 A
244
22.5 Ac.
705-1047

135-387
K. G. Thaler 551-310 16 A
D. Smith
443-260
576-704

736-1150
R. Thaler 210-533
717-1277
38.16 Ac.

200-592
E. R. Thaler
195-150
R. F. M. Walters 10 A

47.50 A
576-53
B. M. Loveland

559-602
49.75 A
500 Ac.
L. D. K. Kirby 764-365
K. Ricks

607-254
D. B. Loveland
607-941
D. VonKong
B. Loveland
607-940 1.85 Ac.

11.16 Ac
752-778
S. Burkett
B. Nosse

374-375
571-574
574-25311
L. C. Fisher
7.65 Ac.

6.73 Ac
L. C. Fisher

615-1270
L. C. Fisher
7.65 Ac.

15.37 A
T. L. Baker 580-755
237-491
K. G. Thaler 551-310 16 A

43.87 A
A. S. Stanley

736-1150
R. Thaler 210-533
717-1277
38.16 Ac.

200-592
E. R. Thaler
195-150
R. F. M. Walters 10 A

538-1221
103.175 A

607-254
D. B. Loveland
607-941
D. VonKong
B. Loveland
607-940 1.85 Ac.

11.16 Ac
752-778
S. Burkett
B. Nosse

374-375
571-574
574-25311
L. C. Fisher
7.65 Ac.

6.73 Ac
L. C. Fisher

615-1270
L. C. Fisher
7.65 Ac.

615-1270
L. C. Fisher
7.65 Ac.

30 A
705-1047

43.87 A
A. S. Stanley

736-1150
R. Thaler 210-533
717-1277
38.16 Ac.

200-592
E. R. Thaler
195-150
R. F. M. Walters 10 A

538-1221
103.175 A

607-254
D. B. Loveland
607-941
D. VonKong
B. Loveland
607-940 1.85 Ac.

11.16 Ac
752-778
S. Burkett
B. Nosse

374-375
571-574
574-25311
L. C. Fisher
7.65 Ac.

6.73 Ac
L. C. Fisher

615-1270
L. C. Fisher
7.65 Ac.

615-1270
L. C. Fisher
7.65 Ac.

5.5 Ac
443-260
576-704
D. Smith

43.87 A
A. S. Stanley

736-1150
R. Thaler 210-533
717-1277
38.16 Ac.

200-592
E. R. Thaler
195-150
R. F. M. Walters 10 A

538-1221
103.175 A

607-254
D. B. Loveland
607-941
D. VonKong
B. Loveland
607-940 1.85 Ac.

11.16 Ac
752-778
S. Burkett
B. Nosse

374-375
571-574
574-25311
L. C. Fisher
7.65 Ac.

6.73 Ac
L. C. Fisher

615-1270
L. C. Fisher
7.65 Ac.

615-1270
L. C. Fisher
7.65 Ac.

682-558
11.65 Ac
663-3
K. S. Graham
E. A. Chappell

154.5 Ac.
C. Perko

736-1150
R. Thaler 210-533
717-1277
38.16 Ac.

200-592
E. R. Thaler
195-150
R. F. M. Walters 10 A

538-1221
103.175 A

607-254
D. B. Loveland
607-941
D. VonKong
B. Loveland
607-940 1.85 Ac.

11.16 Ac
752-778
S. Burkett
B. Nosse

374-375
571-574
574-25311
L. C. Fisher
7.65 Ac.

6.73 Ac
L. C. Fisher

615-1270
L. C. Fisher
7.65 Ac.

615-1270
L. C. Fisher
7.65 Ac.

682-558
11.65 Ac
663-3
K. S. Graham
E. A. Chappell

154.5 Ac.
C. Perko

736-1150
R. Thaler 210-533
717-1277
38.16 Ac.

200-592
E. R. Thaler
195-150
R. F. M. Walters 10 A

538-1221
103.175 A

607-254
D. B. Loveland
607-941
D. VonKong
B. Loveland
607-940 1.85 Ac.

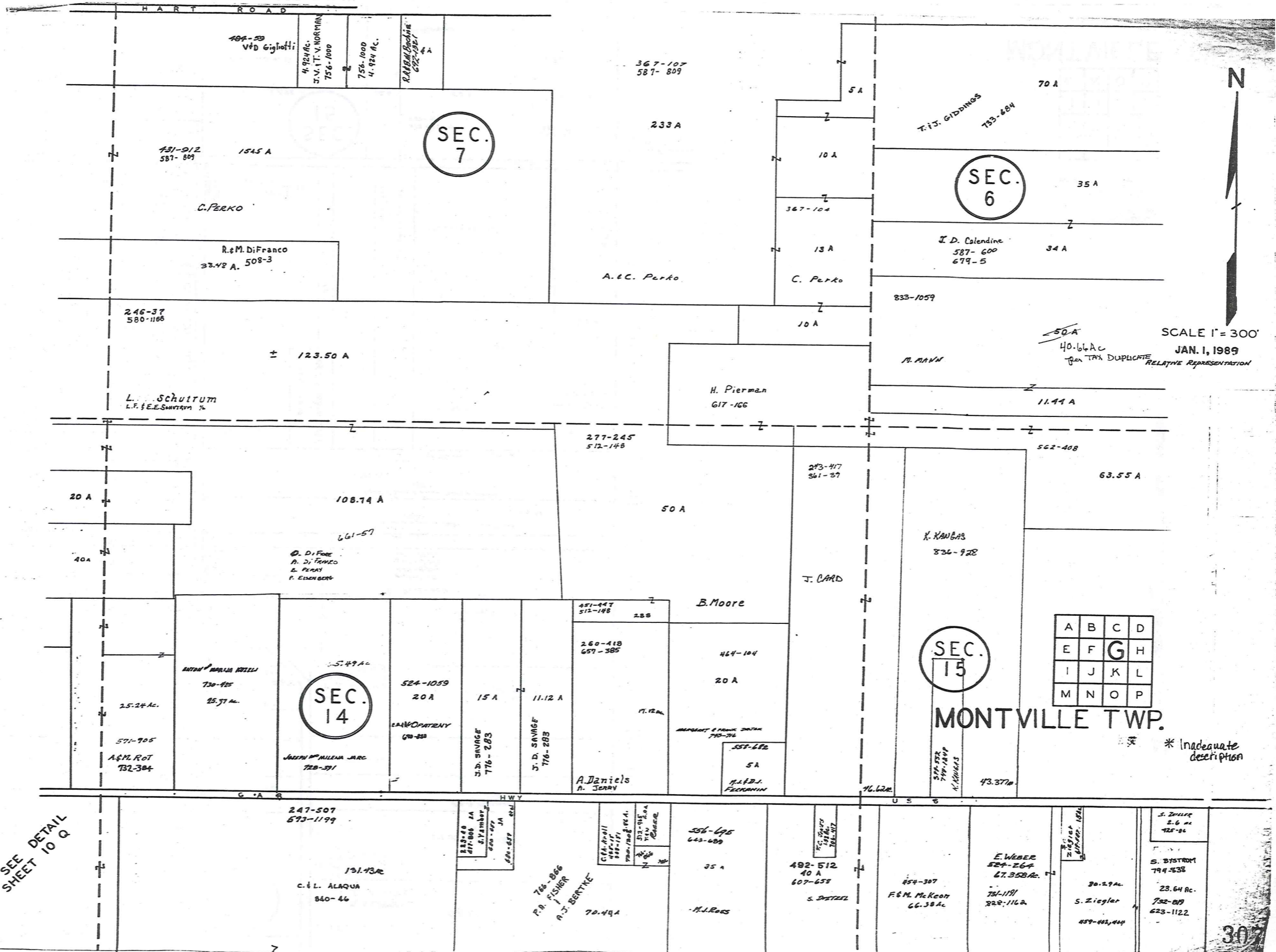
11.16 Ac
752-778
S. Burkett
B. Nosse

374-375
571-574
574-25311
L. C. Fisher
7.65 Ac.

6.73 Ac
L. C. Fisher

615-1270
L. C. Fisher
7.65 Ac.

615-1270
L. C. Fisher
7.65 Ac.



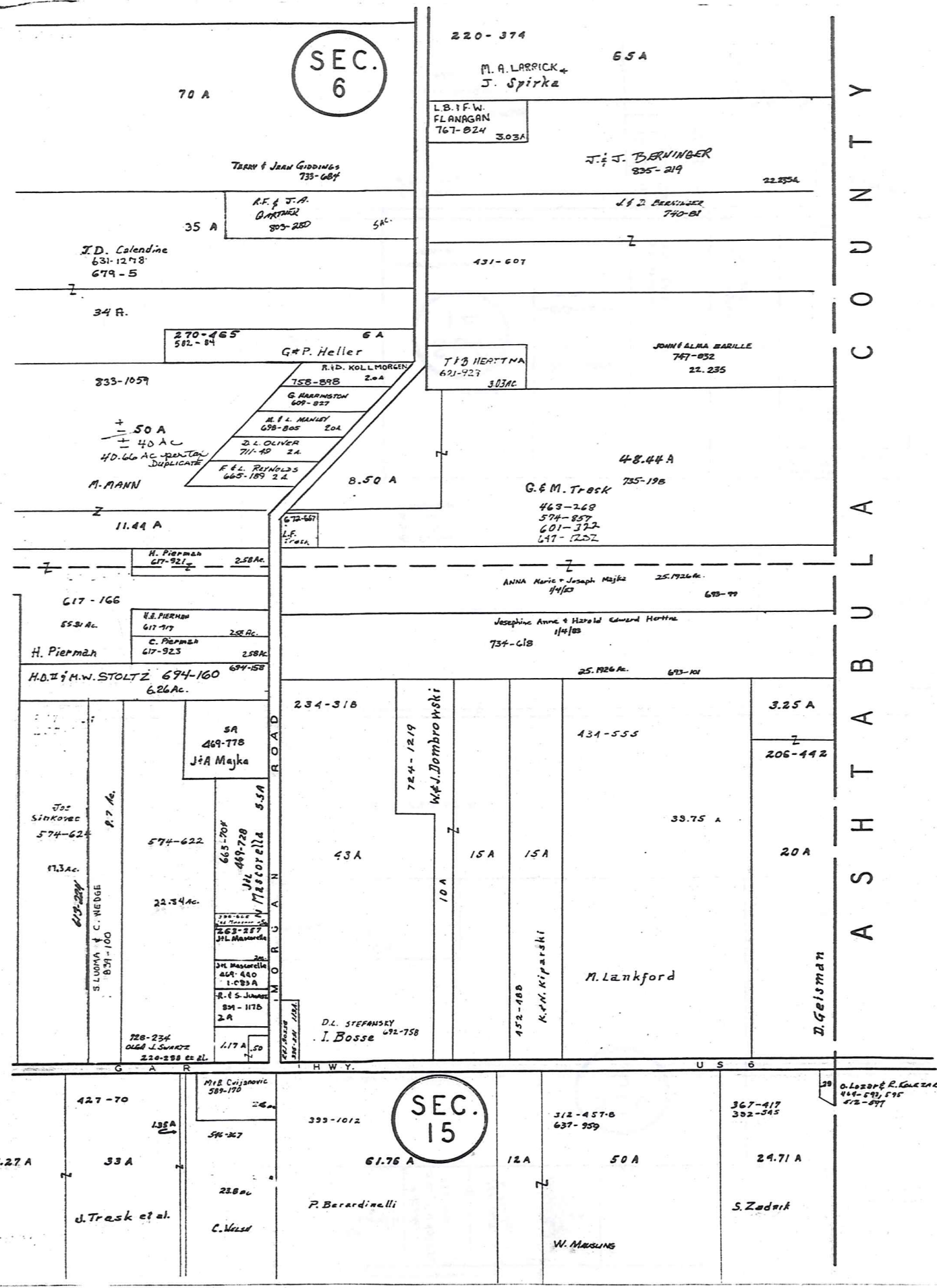
A	B	C	D
E	F	G	H
I	J	K	L
M	N	O	P

SEE DETAIL SHEET 10 Q

307

SEC. 6

SEC. 15



A S H T A B U L L A C O U N T Y



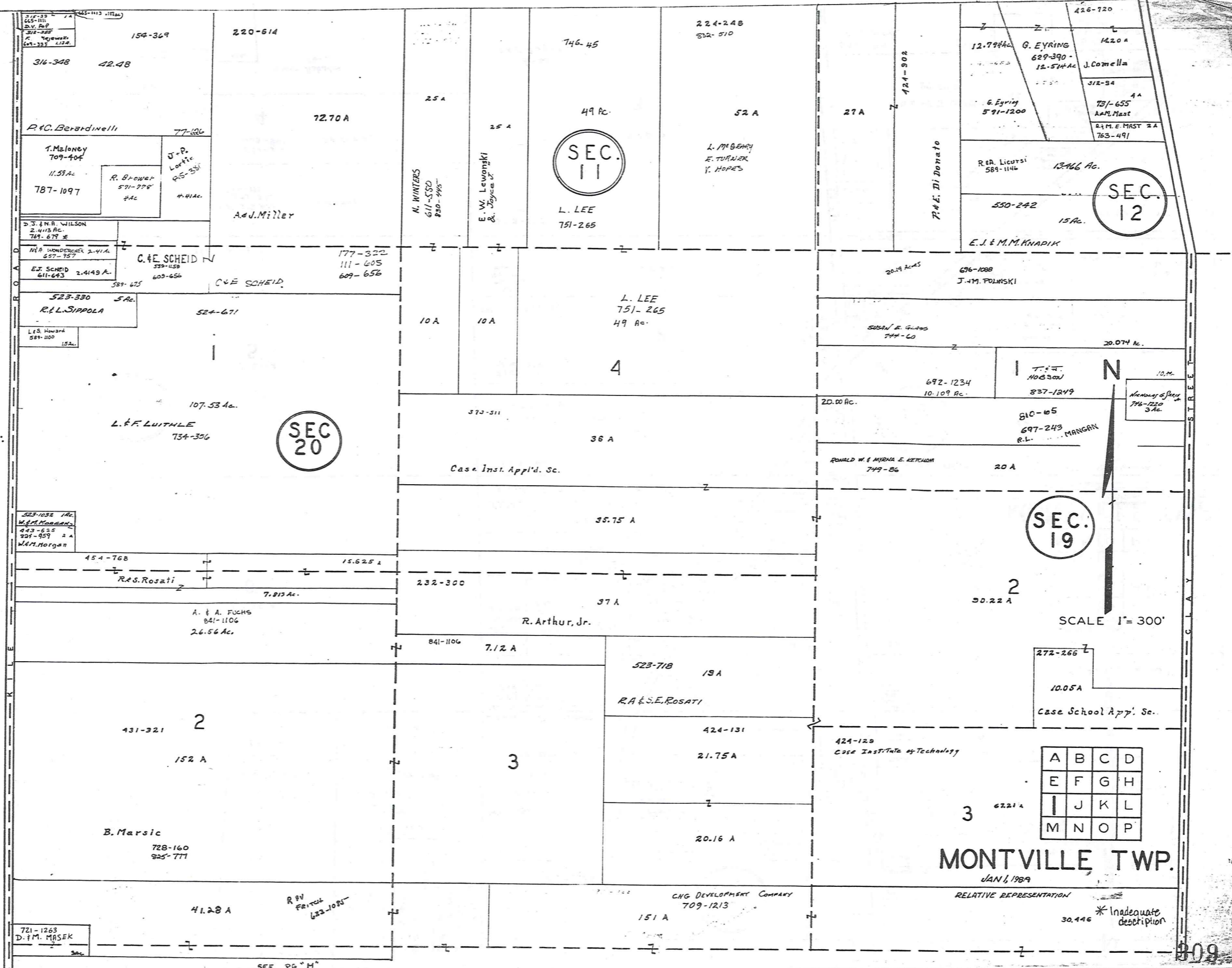
SCALE 1" = 300'

* Inadequate description
 JANUARY, 1989
 RELATIVE REPRESENTATION

A	B	C	D
E	F	G	H
I	J	K	L
M	N	O	P

MONTVILLE TWP

H A M B D E N T O W N S H I P



217-227 7A
655-1111
D.V. REP
312-222
K. Mewers
671-325 112A

316-348 42.48

R.C. Berardinelli 77-626

T. Maloney 709-404
11.33 Ac
787-1097

J.P. Lortie
RS-251
4.41 Ac

R. Brower
571-778
2 Ac

D.S. & N.R. Wilson
2.4113 Ac
769-679 *

M.R. Wondolchen 2.41A
657-757

E.J. Scheid 2.4149 A
611-643

523-330 5 Ac
R.L. Sippola

L.E. Howard
589-100
15.2 Ac

523-1032 1Ac
W.A. Morgan
443-625
924-959 2 A
W.A. Morgan

45.4-768

R.A.S. Rosati

7.813 Ac

A. & A. Fuchs
841-1106
26.56 Ac

431-321 2

152 A

B. Marsic

728-160
925-777

721-1263
D. & M. MASEK

220-614

72.70 A

A.J. Miller

G.E. Scheid

339-458
603-656

CVE SCHEID

524-671

L.F. LITTLE

734-356

15.625 A

7.813 Ac

26.56 Ac

2

152 A

B. Marsic

728-160
925-777

41.28 A

SEC 20

25 A

25 A

N. WINTERS
611-550
820-995

10 A

373-511

Case Inst. Appl'd. Sc.

232-300

841-1106 7.12 A

3

R.W. Fritzel
622-1051

746-45

49 Ac

SEC 11

L. LEE
751-265

10 A

4

36 A

35.75 A

37 A

R. Arthur, Jr.

3

151 A

224-248
532-510

52 A

L. McBarry
E. Turner
Y. Hopes

L. LEE
751-265

49 Ac

4

36 A

35.75 A

37 A

R. Arthur, Jr.

3

151 A

27 A

27 A

L. McBarry
E. Turner
Y. Hopes

L. LEE
751-265

49 Ac

4

36 A

35.75 A

37 A

R. Arthur, Jr.

3

151 A

12.794 Ac

G. EYRING
629-390
12.544 Ac

G. Eyring
591-1200

R.A. Licursi
589-1146

550-242

E.J. & M.M. Knapiak

20.19 Ac

696-1088

J.M. POLINSKI

Susan E. Glass
744-60

692-1234
10.109 Ac

810-65
697-243
R.L. MANGANO

20 A

35.75 A

37 A

R. Arthur, Jr.

3

151 A

426-720

14.20 A

J. Comella

512-94

73/-655

A.M. Mast

R.M.E. Mast 2 A
763-491

13.466 Ac

15 Ac

E.J. & M.M. Knapiak

20.074 Ac

20.074 Ac

20.074 Ac

20.074 Ac

20.074 Ac

20.074 Ac

20.074 Ac

20.074 Ac

20.074 Ac

20.074 Ac

20.074 Ac

20.074 Ac

20.074 Ac

20.074 Ac

20.074 Ac

20.074 Ac

20.074 Ac

20.074 Ac

20.074 Ac

20.074 Ac

20.074 Ac

20.074 Ac

20.074 Ac

SEC 19

2

30.22 A

30.22 A

30.22 A

30.22 A

30.22 A

30.22 A

30.22 A

30.22 A

30.22 A

30.22 A

30.22 A

30.22 A

30.22 A

30.22 A

30.22 A

30.22 A

30.22 A

30.22 A

A	B	C	D
E	F	G	H
I	J	K	L
M	N	O	P

MONTVILLE TWP.

JAN 6, 1989

RELATIVE REPRESENTATION

30.446 *Inadequate description

SEC. 12

SEC. 13

SEC. 18

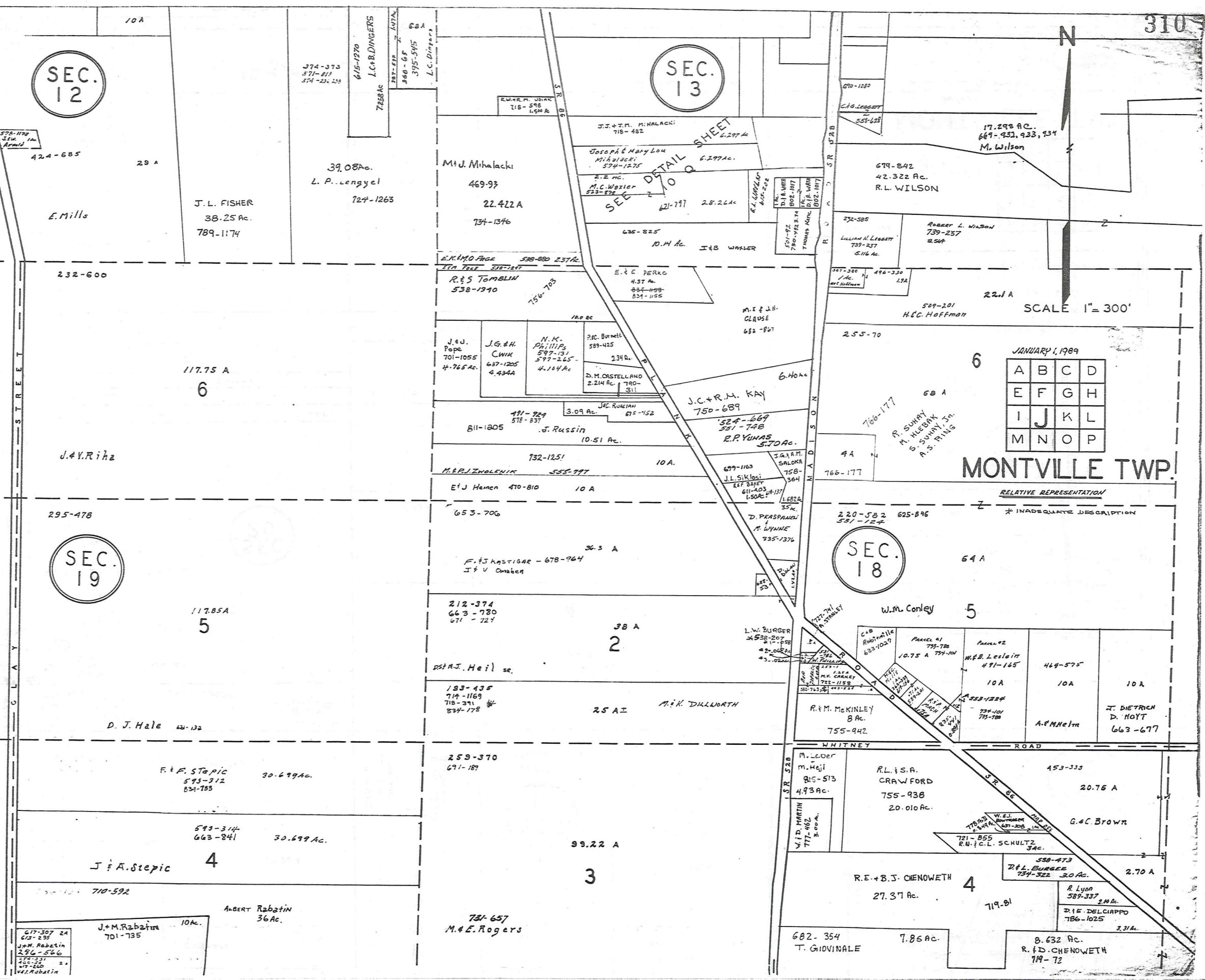
MONTVILLE TWP.

JANUARY 1, 1989

A	B	C	D
E	F	G	H
I	J	K	L
M	N	O	P

SCALE 1" = 300'

RELATIVE REPRESENTATION
* INADEQUATE DESCRIPTION



617-307 24
617-238
J.M. Rabatin
296-566
400-331
417-260
J.M. Rabatin

J.M. Rabatin
701-735
10 Ac.

ALBERT Rabatin
36 Ac.

731-657
M.E. Rogers

682-354
T. GIOVINALE
7.85 Ac.

B. 632 Ac.
R. D. CHENOWETH
719-72

R.E. + B.S. CHENOWETH
27.37 Ac.

538-473
D.L. BURGER
734-322 30 Ac.

R. Lynn
589-337
2.8 Ac.

D. F. DELCIAPPO
786-1025
3.31 Ac.

719.81

G.C. Brown

R.L. S.A.
CRAWFORD
755-938
20.010 Ac.

453-333
20.76 A

R.M. MCKINLEY
8 Ac.
755-942

Parcel #1
10.75 A 734-101

Parcel #2
W.B. Lesleit
491-165

469-575

10A

10A

10A

J. DIETRICH
D. HOYT
663-677

A.F. Helms

W.M. Conley
5

Parcel #1
10.75 A 734-101

Parcel #2
W.B. Lesleit
491-165

469-575

10A

10A

10A

10A

10A

10A

10A

10A

10A

10A

10A

10A

10A

10A

10A

10A

10A

10A

10A

10A

10A

10A

10A

10A

10A

10A

10A

10A

10A

10A

10A

10A

10A

10A

10A

10A

10A

10A

10A

10A

10A

10A

10A

10A

10A

10A

10A

10A

10A

10A

10A

10A

10A

10A

10A

10A

10A

10A

10A

10A

10A

10A

10A

10A

10A

10A

10A

10A

10A

10A

10A

10A

10A

10A

10A

10A

10A

10A

10A

10A

10A

10A

10A

10A

10A

10A

10A

10A

10A

10A

10A

10A

10A

10A

10A

10A

10A

10A

10A

10A

10A

10A

10A

10A

10A

10A

10A

10A

10A

10A

10A

10A

10A

10A

10A

10A

10A

10A

10A

10A

10A

10A

10A

10A

10A

10A

10A

10A

10A

10A

10A

10A

10A

10A

10A

10A

10A

10A

10A

10A

10A

10A

10A

10A

10A

10A

10A

10A

10A

10A

10A

10A

10A

10A

10A

10A

10A

10A

10A

10A

10A

10A

10A

10A

10A

10A

10A

10A

10A

10A

10A

10A

10A

10A

10A

10A

10A

10A

10A

10A

10A

10A

10A

10A

10A

10A

10A

10A

10A

10A

10A

10A

10A

10A

10A

10A

10A

10A

10A

10A

10A

10A

10A

10A

10A

10A

10A

10A

10A

10A

10A

10A

10A

10A

10A

10A

10A

10A

10A

10A

10A

10A

10A

10A

10A

10A

10A

10A

10A

10A

10A

10A

10A

10A

10A

10A

10A

10A

10A

10A

10A

10A

10A

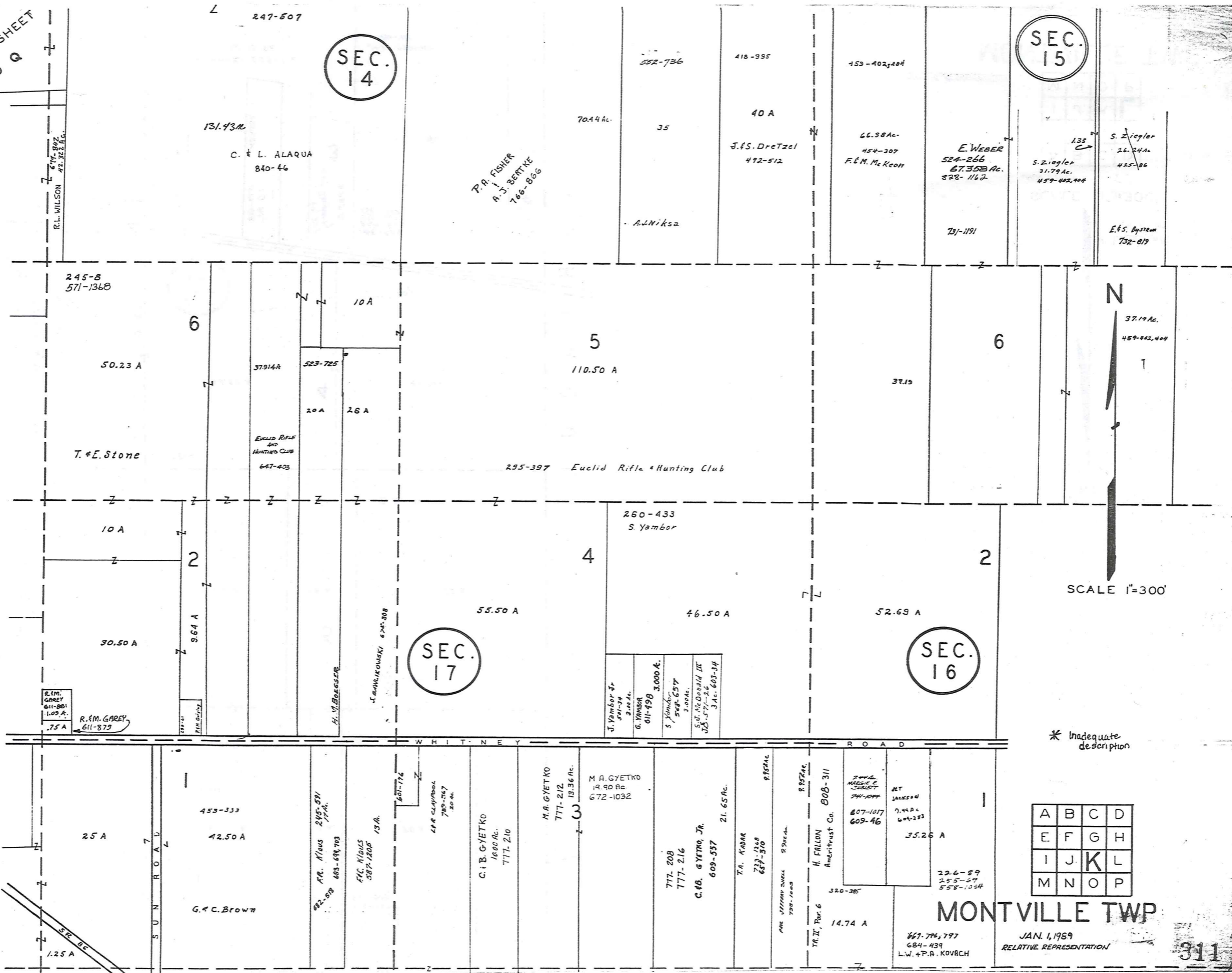
10A

10A

10A

10A

SEE
DETAIL SHEET
10 Q



SEC. 14

SEC. 15

SEC. 17

SEC. 16

N

SCALE 1"=300'

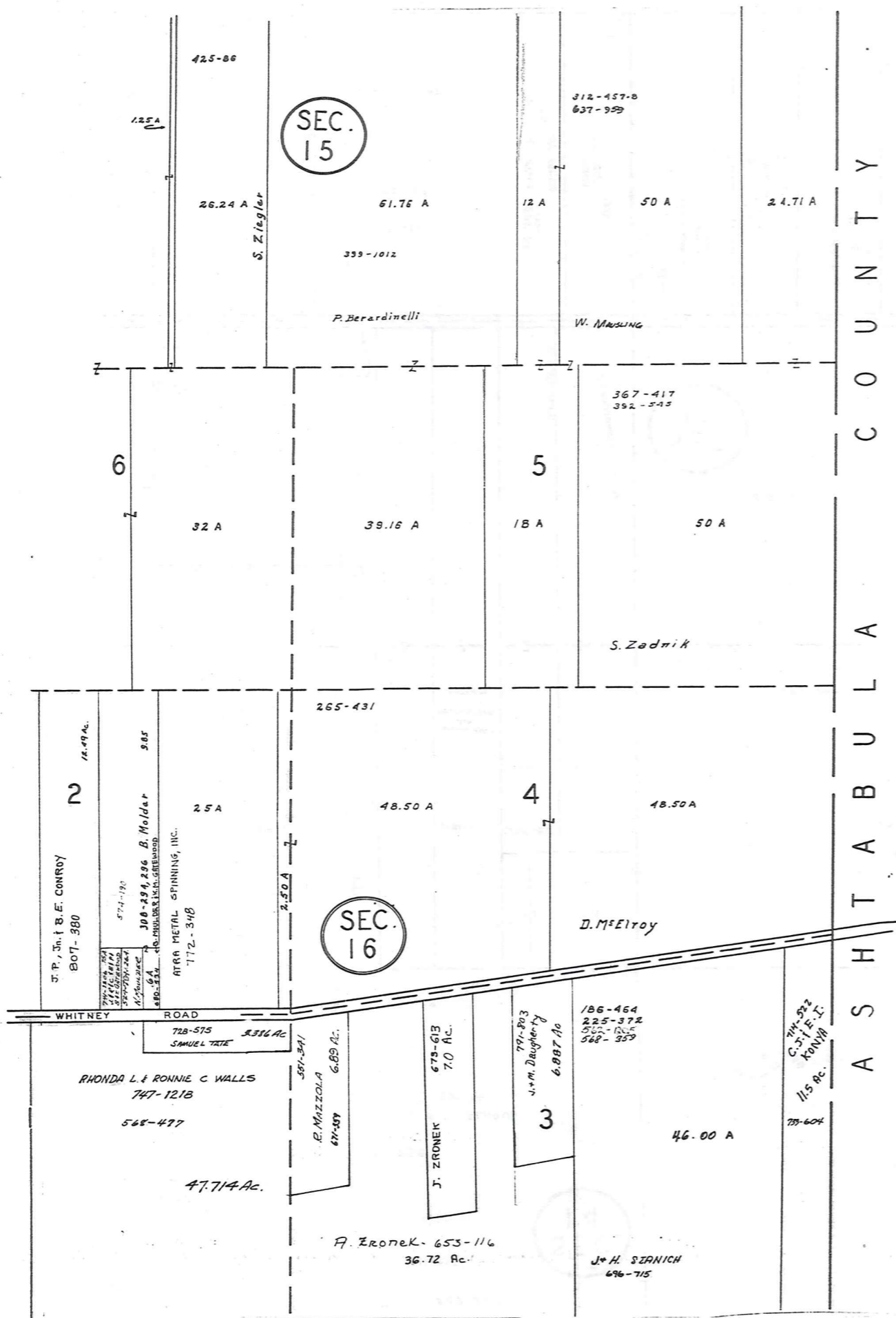
* Inadequate description

A	B	C	D
E	F	G	H
I	J	K	L
M	N	O	P

MONTVILLE TWP

JAN. 1, 1969
RELATIVE REPRESENTATION

311



T W P 1 5 N R 3 1 W S 1 6

18 SEC



* Inadequate description

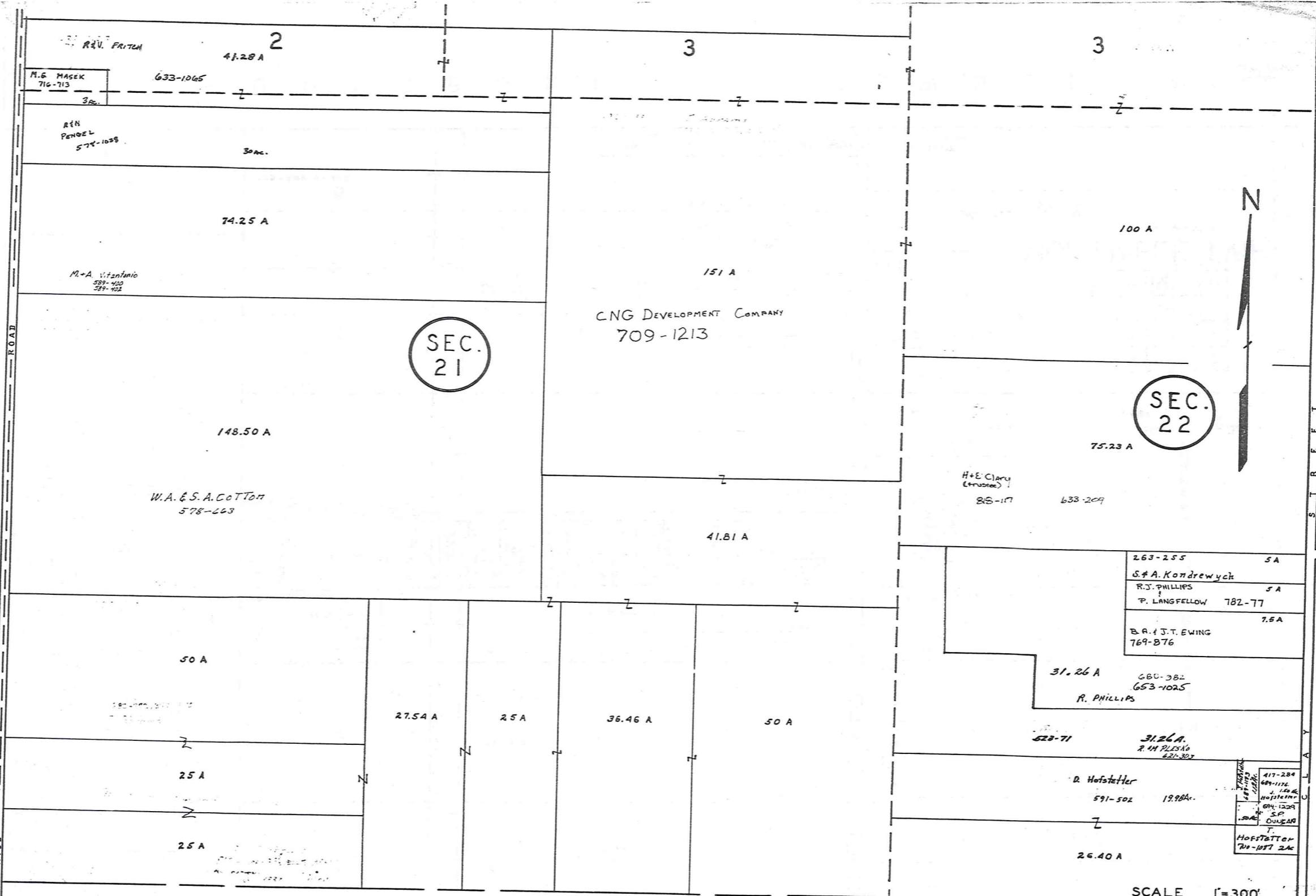
SCALE 1"=300'
JAN. 1, 1989

A	B	C	D
E	F	G	H
I	J	K	L
M	N	O	P

RELATIVE REPRESENTATION

MONTVILLE TWP.

H A M B D E N T O W N S H I P



SEC. 21

SEC. 22



SCALE 1"=300'

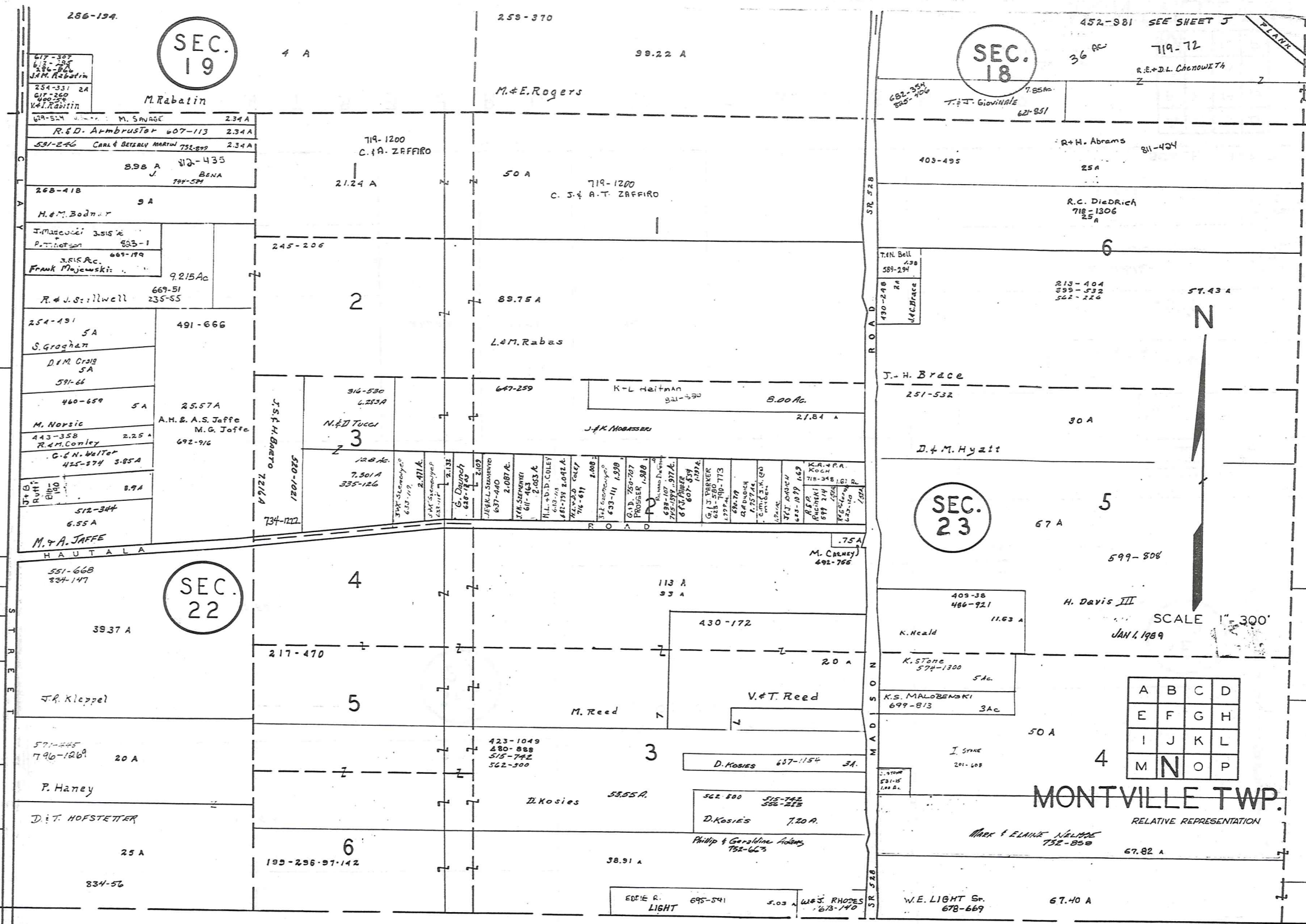
H U N T S B U R G T O W N S H I P

A	B	C	D
E	F	G	H
I	J	K	L
M	N	O	P

JAN. 1, 1909
RELATIVE REPRESENTATION

MONTVILLE TWP

* Inadequate description



SEC. 19

SEC. 18

SEC. 22

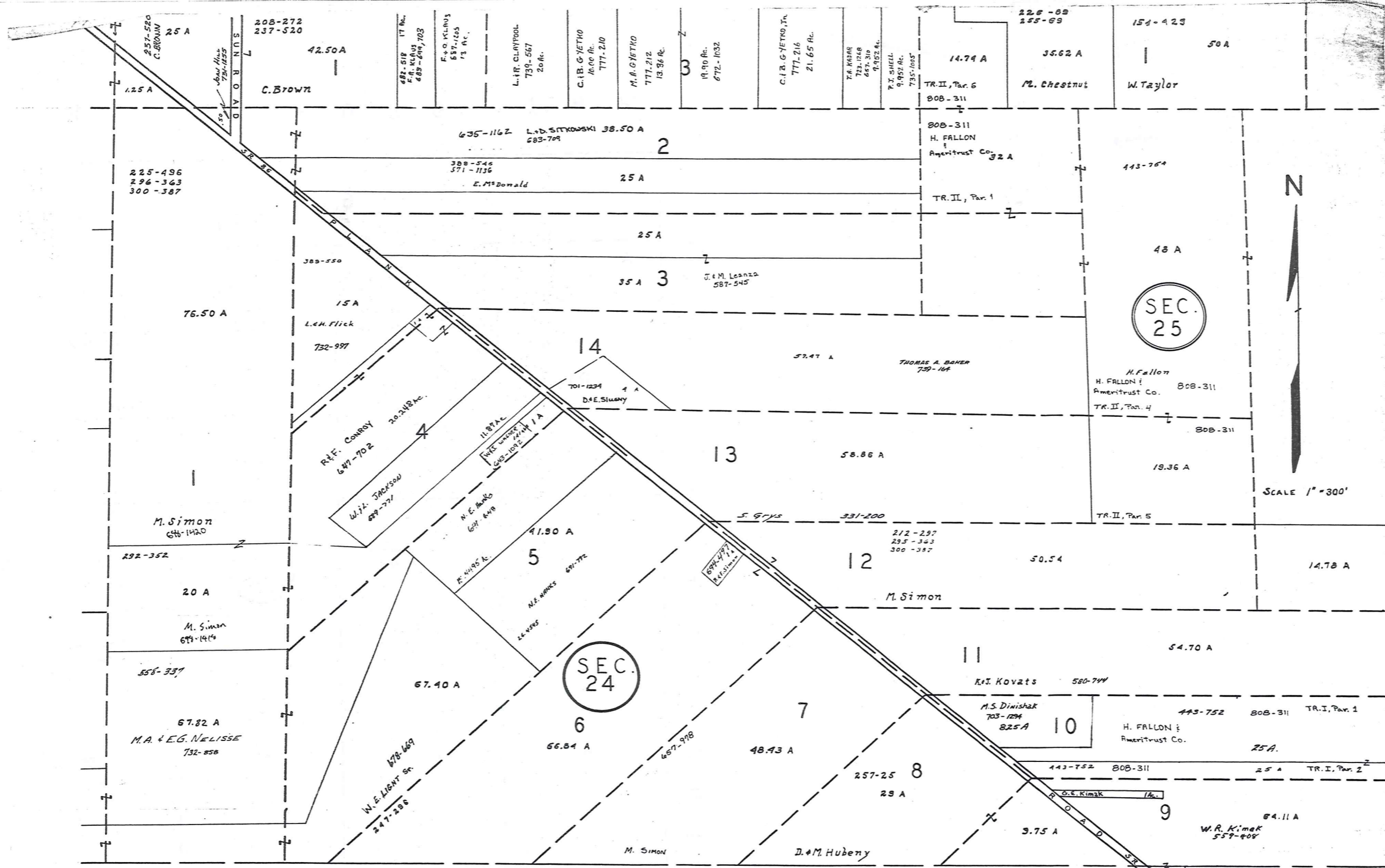
SEC. 23

A	B	C	D
E	F	G	H
I	J	K	L
M	N	O	P

MONTVILLE TWP.

HUNTSBURG TOWNSHIP

* Inadequate description



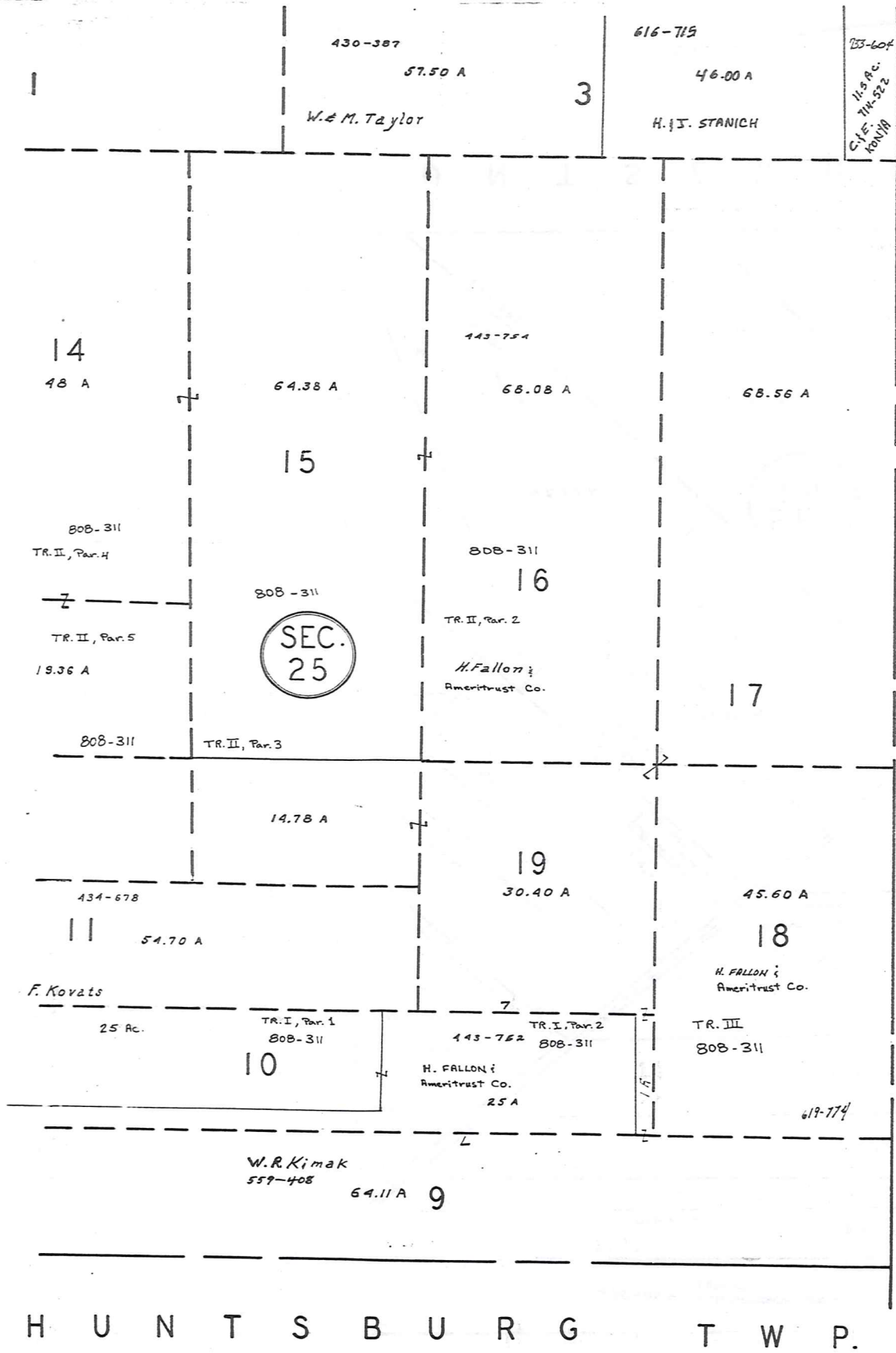
H U N T S B U R G T O W N S H I P

JAN 1, 1989
SCALE 1" = 300'

'RELATIVE REPRESENTATION

A	B	C	D
E	F	G	H
I	J	K	L
M	N	O	P

*inadequate description



A S H T A B U L A C O U N T Y

H U N T S B U R G T W P.



SCALE 1" = 300'

JAN 1, 1989

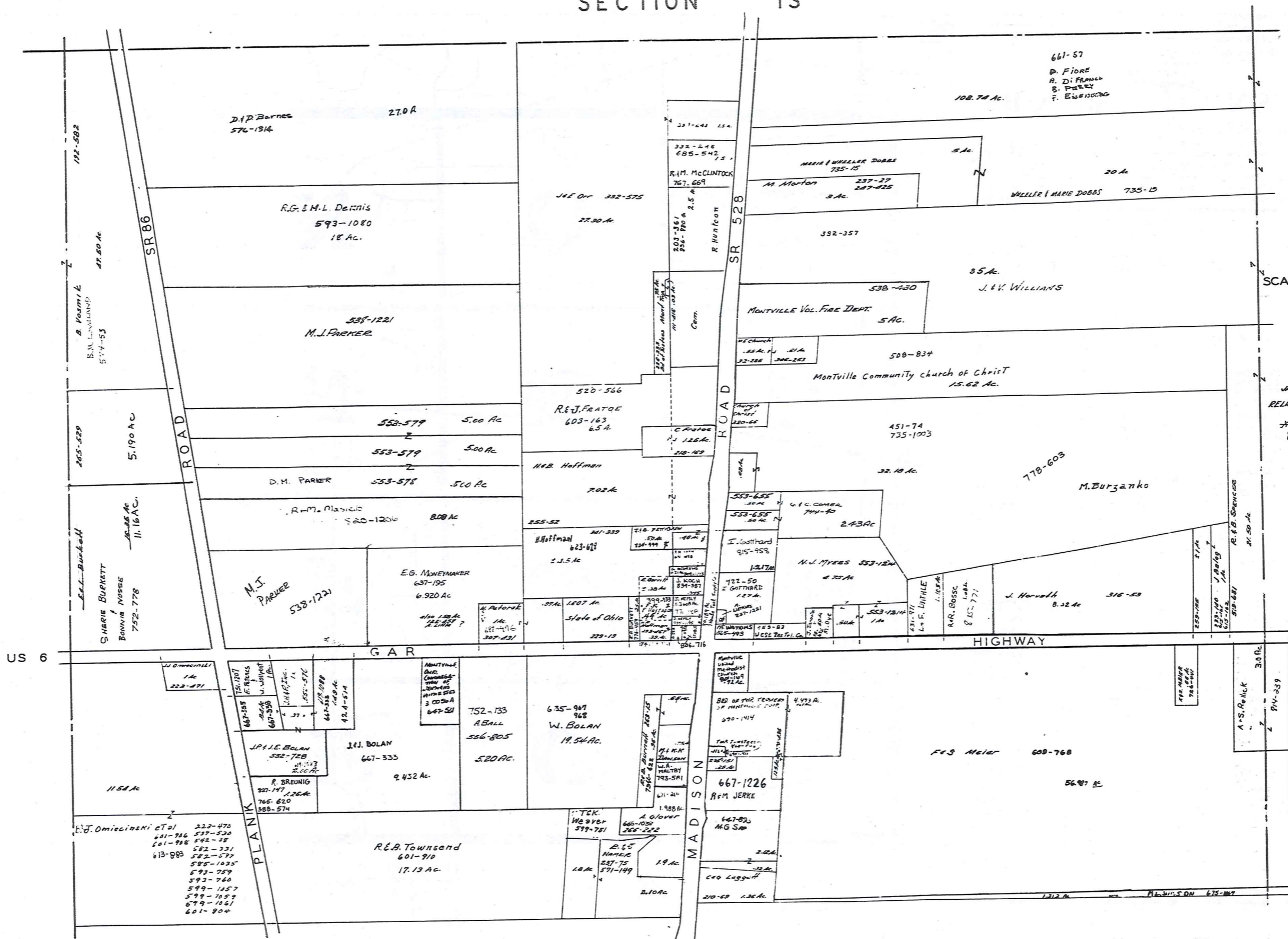
RELATIVE REPRESENTATION

* Inadequate description

A	B	C	D
E	F	G	H
I	J	K	L
M	N	O	P

MONTVILLE TWP

MONTVILLE SECTION 13 TWP



SCALE 1" = 200'

JANUARY 1, 1989
 RELATIVE REPRESENTATION
 * HOFFMAN E.T.P.
 816-150
 .51 AC
 .46 AC
 .44 AC
 .39 AC

* Inadequate description

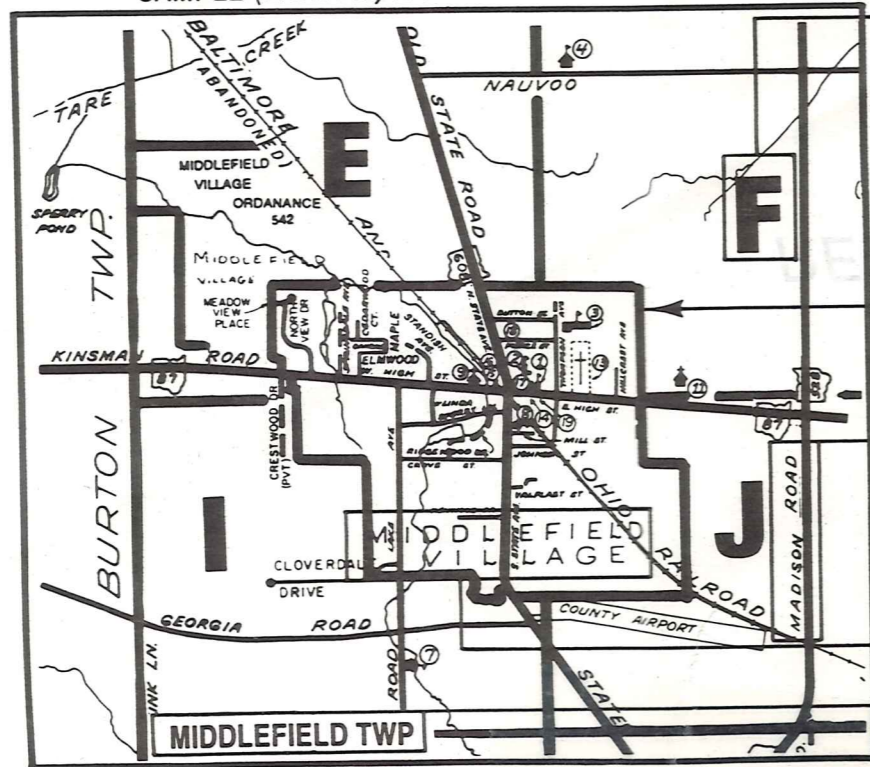
Explanation and Use Sheet for Geauga County, Ohio

A

SAMPLE (PARTIAL) COUNTY INDEX MAP



SAMPLE (PARTIAL) MUNICIPALITY INDEX MAP



SAMPLE (PARTIAL) MAP PAGE



- Tract Lot Number
- Acreage
- Township Name
- Village Boundary
- Street Name
- Village Name
- Township Boundary
- Owners Name
- Denotes Continuous Ownership
- Deed Book & Page
- Map Page Number
- Township Name
- Village Name

- Village Boundary
- Street Name
- Village Name
- Township Name

USE OF THE MAP VOLUME

1. LOCATE THE GENERAL AREA OF INTEREST ON THE COUNTY INDEX MAP AND NOTE THE MUNICIPALITY NAME (TOWNSHIP OR VILLAGE).
 2. REFER TO THE TABLE OF CONTENTS AND NOTE THE BEGINNING ATLAS PAGE NUMBER FOR THE MUNICIPALITY OF INTEREST.
 3. TURN TO THE PAGE INDICATED, ON THIS PAGE WILL APPEAR AN INDEX MAP FOR THAT MUNICIPALITY.
 4. LOCATE THE GENERAL AREA OF INTEREST AND NOTE THE MAP PAGE NUMBER. THIS MAY BE EITHER A LETTER OR A NUMBER.
 5. MAP PAGES ARE IN ALPHABETICAL (OR NUMERICAL) SEQUENCE FOLLOWING THE MUNICIPALITY INDEX MAP. FOLLOW SEQUENCE TO THE MAP PAGE INDICATED.
 6. LOCATE SPECIFIC PARCEL OF INTEREST AND NOTE THE DESIRED INFORMATION.
- NOTE: ON SOME MAPS YOU MAY BE REFERRED TO A DETAIL SHEET SHOWING AN ENLARGEMENT OF THE AREA. THESE MAPS ARE FOUND AT THE END OF THE REGULAR MAP PAGES IN EACH MUNICIPALITY IN EITHER ALPHABETICAL OR NUMERICAL SEQUENCE.
- NOTE: CHARDON VILLAGE HAS TITLE SHEETS. TO LOCATE OWNERS NAME, NOTE THE PARCEL NUMBER, REFER TO THE TITLE PAGE FOLLOWING THE MAP OF INTEREST, FOLLOW NUMERICAL SEQUENCE TO THE PARCEL NUMBER OF INTEREST AND NOTE THE DESIRED INFORMATION. IN ALL OTHER MUNICIPALITIES THE OWNERS NAME APPEARS ON THE MAP PAGE.